

Antioch College Faculty Count and Student Enrollment

The Antioch Papers 2008

TABLE OF CONTENTS

Pg. 2 Antioch College - Full-time Instructional Faculty

This picture of Antioch College faculty is based on IPEDS (Integrated Postsecondary Education Data System) data reported to U.S. Department of Education by Antioch College/University. The IPEDS data was gathered from a combination of IPEDS reporting forms on file in the Antioch College Dean of Faculty's Office (1997-2001) and the official IPEDS reports on file at the College (2002-07). Because the Antioch Papers researchers do not have access to the on-line IPEDS database for this complete time period, we would welcome any updates of this data from researchers who do have such access. It should be noted that according to the IPEDS reporting forms on file at the College there were zero tenure track faculty in 2002. No tenure-track faculty received notice that their tenure-track status had been revoked in 2002. The zero number of tenure-track faculty in 2002 could be the result of a mistake due to confusion concerning the downsizing and hiring freeze at the College, or it could be due to some other event that has not been made public. It should be noted that the figures for "FA 00" and "FA 07" were not available so for these two citations the previous year's numbers have been repeated.

Pg. 3-7 Antioch College Enrollment - 1997-07

Documents in this section are contributions compiled by Antioch Papers researchers to the archeology of Antioch College enrollment. From 2000 to 2004 three different staff persons have been responsible for recording and compiling this data, so possible shifts in methodology and software may add some noise to these enrollment numbers. This information was produced by the person currently in charge of the University's IR (Institutional Research).

It is worth noting that 1997 was a problematic year for IR and therefore this year has been excluded from enrollment calculations in this document. Early in 1997 the University began using a new software system for managing its IR, a system that is still in use today. This switch over took place 6 months before the start of the Fall, 1997 semester and may have created some problems for how IR tabulates FTE. For example FTE enrollment jumps 30% from 1997 to 1998. A large portion of this jump was due to a surge in Non-Degree seeking registration credits. Hopefully later versions of this document will be able to account for this jump.

In an attempt to assess enrollment growth during the College's Strategic Plan period (1997-01) we have included an analysis of tuition revenues from the "Antioch Budgets for Dummies," on-line at:

http://theantiochpapers.org/file_download/143/ABD.pdf

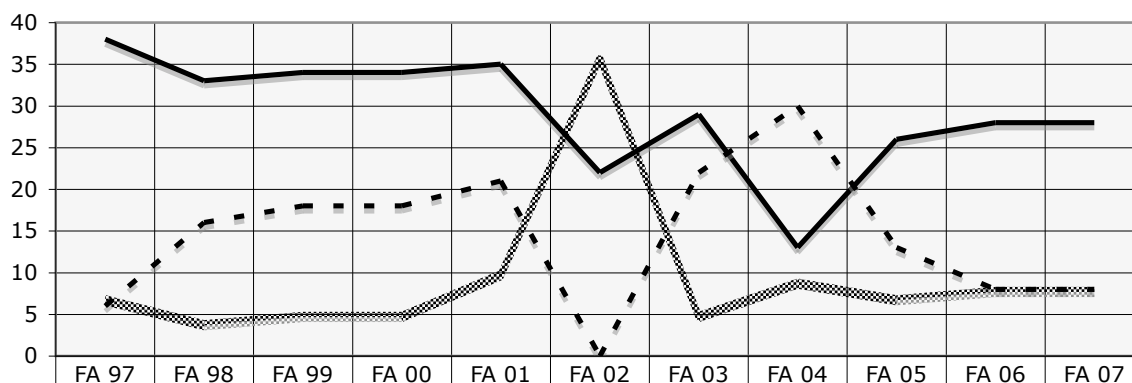
http://theantiochpapers.org/file_download/144/ABD.xls

Antioch College - Full-time Instructional Faculty - Tenured, Tenure Track, and Non-Tenure

Based on IPEDS data - 1997 to 2007

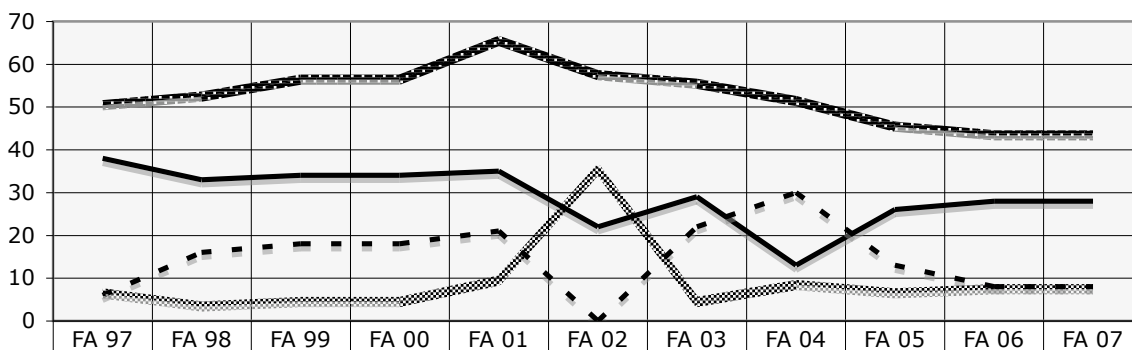
Year	FA 97	FA 98	FA 99	FA 00	FA 01	FA 02	FA 03	FA 04	FA 05	FA 06	FA 07
Full Time Instructional Faculty											
Tenured	38	33	34	34	35	22	29	13	26	28	28
Tenure Track	6	16	18	18	21	0	22	30	13	8	8
Non-Tenure	7	4	5	5	10	36	5	9	7	8	8
Total Full Time Instructional Faculty	51	53	57	57	66	58	56	52	46	44	44
1st Year Retention by Total Cohort	67%	69%	76%	74%	70%	68%	61%	62%	60%	41%	na
	67	69	76	74	70	68	61	62	60	41	41

Antioch College - Full-time Instructional Faculty



— Tenured	38	33	34	34	35	22	29	13	26	28	28
- - - Tenure Track	6	16	18	18	21	0	22	30	13	8	8
..... Non-Tenure	7	4	5	5	10	36	5	9	7	8	8

Antioch College - Full-time Instructional Faculty



— Tenured	38	33	34	34	35	22	29	13	26	28	28
- - - Tenure Track	6	16	18	18	21	0	22	30	13	8	8
..... Non-Tenure	7	4	5	5	10	36	5	9	7	8	8
- . - . Total	51	53	57	57	66	58	56	52	46	44	44

Antioch College Enrollment - 1997-07 - Detail View

Data from the Antioch College/University Office of Institutional Research

	FA 97	FA 98	FA 99	FA 00	FA 01	FA 02	FA 03	FA 04	FA 05	FA 06	FA 07
A 1st Year Retention by Total Cohort	67%	69%	76%	74%	70%	68%	61%	62%	60%	41%	na
B Degree-Seeking Student Headcount:											
New student registrations						190	182	124	57	120	64
Study student registrations						234	254	181	198	110	134
Co-op student registrations						167	140	144	98	73	11
AEA student registrations						16	25	29	20	27	17
Total Degree-Seeking Headcount	435	504	512	518	556	591	576	449	373	330	226
C Specialty Registration Totals from above Degree-Seeking Headcount											
Part-time (1-6 credits) registrations						3	3	5	1	3	4
Half-time (7-11 credits) registrations						3	0	0			
Pre-paid tuition free term registrations						4	18		14	15	1
Pre-paid tuition (50%) registrations										1	
Tuition free						7	2				
Tuition Remission registrations						5	4		2	1	3
D Non-Degree Seeking Student Headcount:											
Full-time						92	88	92	86	98	100
Less than full-time						44	23	13	5	8	11
Total Non-Degree Headcount						136	111	105	91	106	111
E Specialty Registration Totals from Non-Degree Seeking Headcount											
AEA						78	77	76	67	79	76
Alumni									1		2
Eco-League									2		
Education Certificate						3					
GLCA									3		1
KSU						21		3			
Non-degree						4	2				
Outdoor Education						10	13	11	8	12	12
Postsecondary Option						2	2	3	1	3	4
SOCHE							1	1	2		
Tubigen/Exchange						7	6	5	4	8	12
Tuition Exchange									1		
Tuition free							1				
Tuition Remission - employee						4	2				2
Tuition Remission - spouse/partner/dep.								1	1	4	2
Yellow Springs High School						7	7	9	1		
Other											
Total						136	111	109	91	106	111
F Total Degree plus Non-Degree Seeking Student Headcount:						727	687	554	464	436	337
G Total Degree plus Non-Degree (Full-time only) Student Headcount:						683	664	541	459	428	326
H Degree Seeking FTE											
Total Degree-Seeking Registration Credits	6269	7535	7584	7850	7980	8300	8741	7086	5781	5217	3700
Total Degree Seeking FTE	448	538	542	561	570	593	624	506	413	373	264
I Non-Degree Seeking FTE											
Total Non-Degree Registration Credits	506	1252	1448	1599	1603	1594	1523	1491	1311	1512	1561
Total Non-Degree FTE	36	89	103	114	115	114	109	107	94	108	112
J Total Degree & Non-Degree FTE	484	628	645	675	685	707	733	613	507	481	376

Key to Antioch College Enrollment 1997-07 - Detail View

A. 1st Year Retention by Total Cohort

A cohort is a specific group of students established for tracking purposes. In this case that specific group is 1st year freshmen who have returned for a 2nd year of study.

B. Degree-Seeking Student Headcount

The number of students who have registered for classes and who have attended at least one class during a fall quarter with the intention of obtaining a degree at Antioch College. The "one class" rule is used to remove students from the Headcount who registered for classes but who did not show up in the fall.

C. Specialty Registration Totals from above Degree-Seeking Headcount

The total of number of students from the "Degree Seeking Student Headcount" that are part-time or who have a special status related to their enrollment.

D. Non-Degree Seeking Student Headcount:

The number of students who have registered for classes and who have attended at least one class during a fall quarter without the intention of obtaining a degree at Antioch College. The "one class" rule is used to remove students from the Headcount who registered for classes but who did not show up in the fall. Students are considered full-time if they are registered for 12 or more credit hours and part time if they have registered for 11 or less credit hours during a fall semester.

E. Specialty Registration Totals from Non-Degree Seeking Headcount

The section contains students in specialty programs or who have a special status related to their enrollment.

F. Total Degree plus Non-Degree Seeking Student Headcount

The total "Degree-Seeking Student Headcount" and the total "Non-Degree Seeking Student Headcount" added together.

G. Total Degree plus Non-Degree (Full-time only) Seeking Student Headcount

The total "Degree-Seeking Student Headcount" plus the "Full-time," "Non-Degree Seeking Student Headcount" added together.

H. Degree Seeking FTE

The total number of registration credits hour recorded by "Degree Seeking Headcount" students divided by 14. In this formula 14 credit hours is the minimum amount of credit hours a student needs to take in order to be considered full-time student at the College.

I. Non-Degree Seeking FTE

The total number of registration credits hour recorded by "Non-Degree Seeking Headcount" students divided by 14. In this formula 14 credit hours is the minimum amount of credit hours a student needs to take in order to be considered full-time student at the College.

J. Total Degree & Non-Degree Seeking FTE

This section contains the total number of "Degree Seeking Full-Time Equivalent" plus the "Non-Degree Seeking Full-Time Equivalent" students during a fall semester.

Antioch College
Enrollment Gains - 1998-2002

Degree & Non-Degree Seeking FTE	FA 97	FA 98	FA 99	FA 00	FA 01	FA 02	4 Year Avg.
FTE based on registration credits	484	628	645	675	685	707	-
FTE Yearly Growth (98 referrence year)		-	2.8%	4.6%	1.4%	3.2%	3.0%

Degree Seeking Headcount	FA 97	FA 98	FA 99	FA 00	FA 01	FA 02	4 Year Avg.
Degree Seeking Headcount	435	504	512	518	556	591	-
Yearly Gains (98 ref. year)		-	1.6%	1.2%	7.3%	6.3%	4.1%

Antioch College
Projected Enrollment Losses - 2003-3007

Degree and Non-Degree Seeking FTE	FA 97	FA 98	FA 99	FA 00	FA 01	FA 02	FA 03	FA 04	FA 05	FA 06	FA 07	Total
Actual FTE - 1997-07	484	628	645	675	685	707	733	613	507	481	376	
1997-02 FTE - Actual	484	628	645	675	685	707	-	-	-	-	-	
2003-07 FTE - Projected 5% gain per year	-	-	-	-	-	-	742	777	812	847	883	
Enrollment Losses - Projected minus Actual	-	-	-	-	-	-	9	164	305	366	507	1352

Antioch Col. Degree Seeking Headcount	FA 97	FA 98	FA 99	FA 00	FA 01	FA 02	FA 03	FA 04	FA 05	FA 06	FA 07	Total
Actual Degree Seeking Headcount - 1997-07	435	504	512	518	556	591	576	449	373	330	226	
1997-02 Headcount - Actual	435	504	512	518	556	591	-	-	-	-	-	
2003-07 Headcount Projected 5% gain per yr.	-	-	-	-	-	-	621	651	682	712	742	
Enrollment Losses - Projected minus Actual	-	-	-	-	-	-	45	202	309	382	516	1454

Antioch College - Tuition Revenue Analysis
1997 to 2002

Net Tuition Growth

	A	B	C	D	E	F	G	H	I	J	K	L
	Year	96/97	97-98	98-99	99-00	00-01	01-02	02-03	Average	Total	Average	Total
	Source (for internal use)	bud-20	bud-20	bud-20	bud-28	bud-28	bud-33	bud-33	97 to 01	97 to 01	97 to 02	97 to 02
	Revenues											
1	Gross Tuition & Fees	8,893,663	9,598,204	10,817,666	11,266,083	11,971,121	13,488,761	14,327,740				
2	Less Tuition Discounts	-2,310,298	-2,167,392	-2,496,675	-3,112,064	-2,901,056	-3,901,907	-5,462,158				
3	Net Tuition and Fees	6,583,365	7,430,812	8,320,991	8,154,019	9,070,065	9,586,854	8,865,582				
4	Yearly Net Tuition Growth		12.9%	12.0%	-2.0%	11.2%	5.7%	-7.5%	8.0%	39.8%	5.4%	32.3%
5	Yearly Inflation Rate		2.3%	1.6%	2.2%	3.4%	2.8%	1.6%				
6	Yearly Net Tuition Growth Adjusted for Yearly Inflation		10.5%	10.4%	-4.2%	7.9%	2.9%	-9.1%	5.5%	27.5%	3.1%	18.4%

Gross Tuition Growth

	A	B	C	D	E	F	G	H	I	J	K	L
	Year	96/97	97-98	98-99	99-00	00-01	01-02	02-03	Average	Total	Average	Total
	Source (for internal use)	bud-20	bud-20	bud-20	bud-28	bud-28	bud-33	bud-33	97 to 01	97 to 01	97 to 02	97 to 02
	Revenues											
7	Gross Tuition & Fees	8,893,663	9,598,204	10,817,666	11,266,083	11,971,121	13,488,761	14,327,740				
8	Yearly Gross Tuition Growth		7.9%	12.7%	4.1%	6.3%	12.7%	6.2%	8.7%	43.7%	8.3%	49.9%
9	Yearly Inflation Rate		2.3%	1.6%	2.2%	3.4%	2.8%	1.6%				
10	Yearly Gross Tuition Growth Adjusted for Yearly Inflation		5.6%	11.2%	2.0%	2.9%	9.8%	4.6%	6.3%	31.4%	6.0%	36.0%

Gross Tuition Divided By Tuition Rate

	A	B	C	D	E	F	G	H	I	J	K	L
	Year	96/97	97-98	98-99	99-00	00-01	01-02	02-03	Average	Total	Average	Total
	Source (for internal use)	bud-20	bud-20	bud-20	bud-28	bud-28	bud-33	bud-33	97 to 01	97 to 01	97 to 02	97 to 02
	Revenues											
11	Gross Tuition & Fees	8,893,663	9,598,204	10,817,666	11,266,083	11,971,121	13,488,761	14,327,740				
12	Gross Tuit./Fee Rate	21,628	22,775	23,458	24,397	25,347	26,992	27,715				
13	Gross divided by Rate	411	421	461	462	472	500	517				
14	Yearly Gross/Rate Growth		2.5%	9.4%	0.1%	2.3%	5.8%	3.4%	4.0%	20.1%	3.9%	23.6%